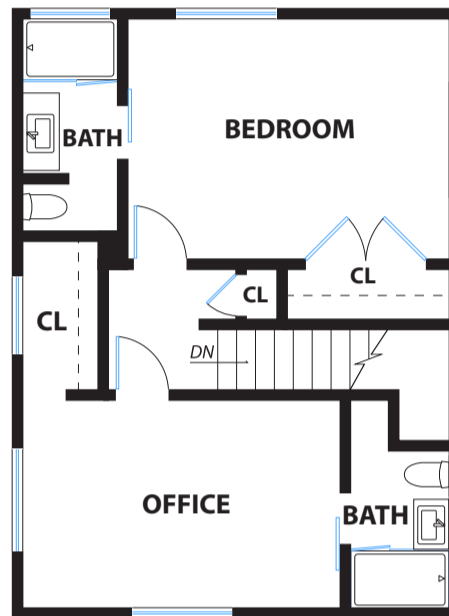
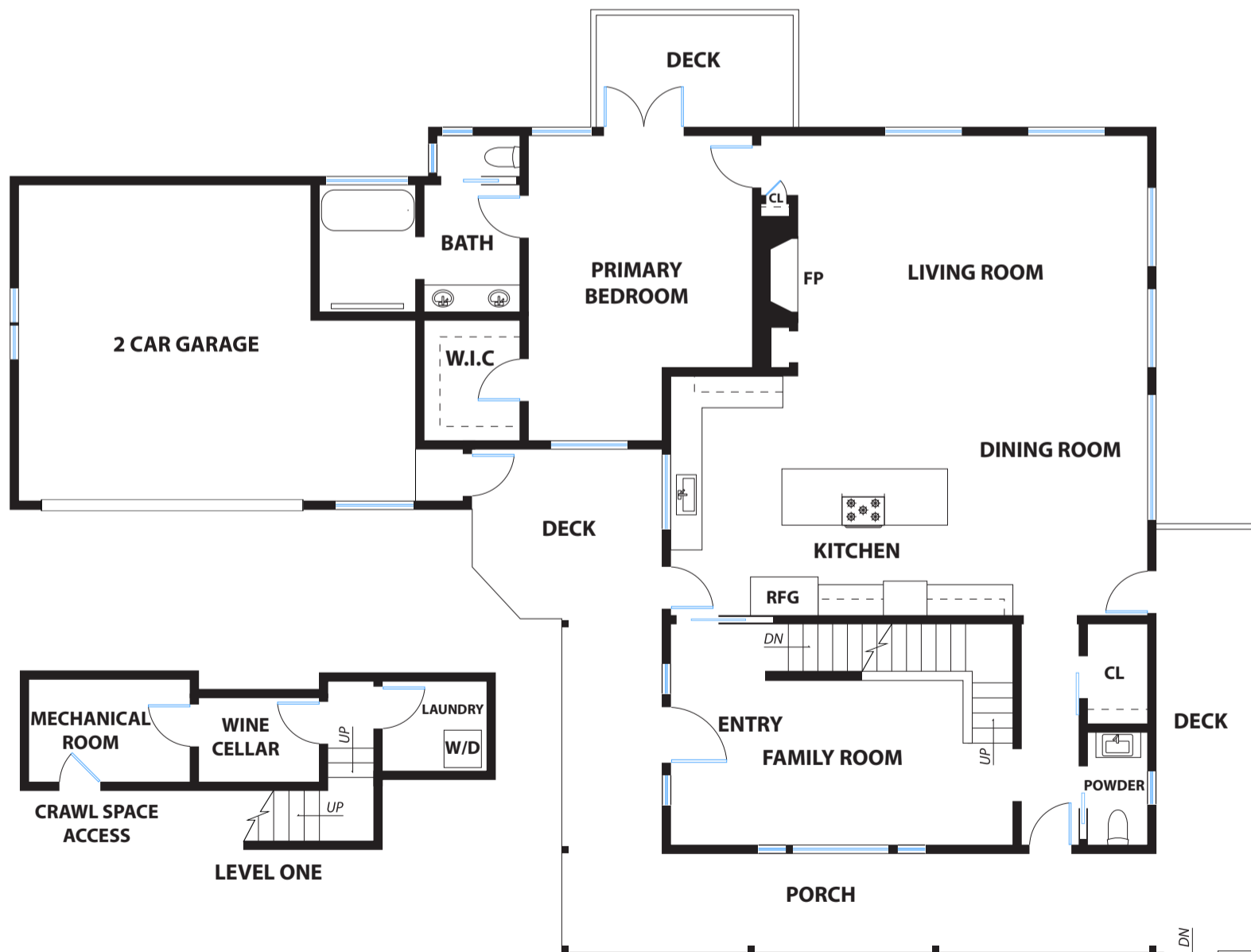


1143 & 1145 HILL ROAD

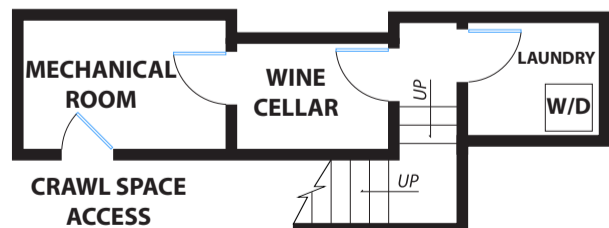
GLEN ELLEN



LEVEL THIRD



LEVEL TWO



LEVEL ONE

PRESENTED BY : TINA SHONE
DRE #: 00787338

DISCLAIMER: RENDERING BY OPEN HOMES PHOTOGRAPHY. ALL MEASUREMENTS ARE APPROXIMATE AND MAY NOT BE EXACT.
DO NOT RELY ON THE ACCURACY OF THIS FLOOR PLAN WHEN DETERMINING THE PRICE OF A PROPERTY OR MAKING DECISIONS
REGARDING BUYING OR SELLING OF PROPERTIES WITHOUT INDEPENDENT VERIFICATION.